



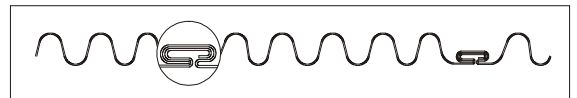
STRETCHDEC® PREMIUM

SEMI FLEXIBLE CORRUGATED DUCTING

STRETCHDEC® PREMIUM is a superb flexible duct constructed of one layer of corrugated aluminium. By the inter lockseam a high airtightness and flexibility is reached.

APPLICATION

- Suitable for mechanical air supply systems and air conditioning systems.
- Systems, where vapors should be exhausted.
- Above mentioned systems, where a special mechanical strength is required.



SPECIFICATIONS

Article code: DXGP{Ø}
 Temperature range: -30°C to 400°C
 Operating pressure: up to +3000 Pa
 Operating air velocity: max. 30 m/s
 Bending radius: min. 1 x Ø
 Standard diameter range: 80 – 500 mm
 Extension length : 3 or 5 mtr

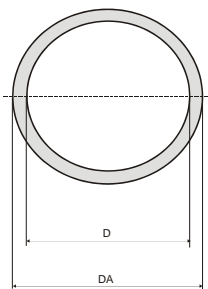
CONSTRUCTION

Total layers: 1

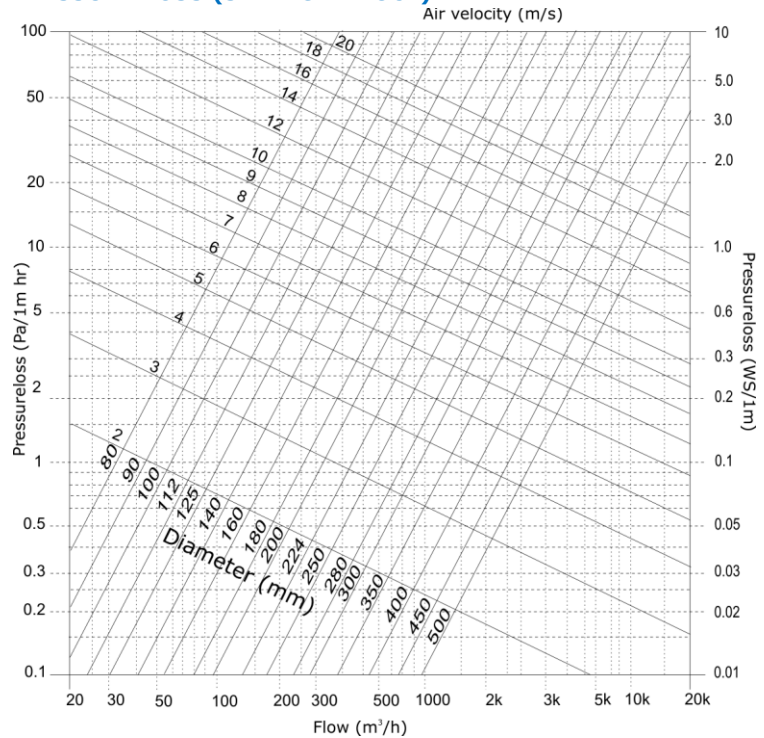
CLASSIFICATIONS

EU (EN 13501-1): A1
 FR (NF): M0
 DE (DIN4102): A1
 BS476: Part 20

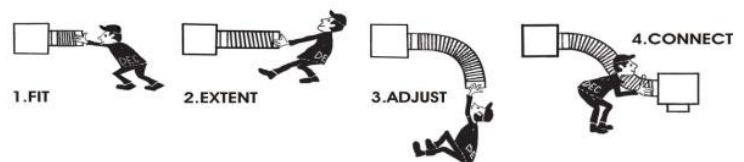
D(mm)	Tolerance	DA (mm)
080	+1,0 / -0	087
100	+1,0 / -0	107
125	+1,0 / -0	132
150	+1,5 / -0	157
160	+1,5 / -0	167
180	+1,5 / -0	187
200	+1,5 / -0	207
224	+1,5 / -0	231
250	+2,0 / -0	257
300	+2,0 / -0	307
315	+2,0 / -0	322
355	+2,0 / -0	362
400	+2,0 / -0	407
450	+2,5 / -0	457
500	+2,5 / -0	507



PRESSURE LOSS (STRAIGHT DUCT)



HOW TO INSTALL



Air-tightness class according to DIN-EN 12237, DIN-EN1507 and DIN-EN12599: Class D

The **STRETCHDEC® PREMIUM** fulfills all the requirements and are classified as specified within EN 13180: *Ventilation for buildings – Ductwork - Dimensions and mechanical requirements for flexible ducts.*

LIABILITY:

The information contained in this brochure was current on the publication date. DEC INTERNATIONAL reserves the right to make changes in details at any time without prior notice. In order to avoid misunderstandings, any interested party is advised to contact DEC INTERNATIONAL checking for any changes in materials and/or information after this brochure was published.

PLEASE NOTICE:

The consultant is responsible for the actual installation and mounting of the product. The mentioned values with respect to temperatures are not appropriate to be used to determine the physical properties. These properties are also dependent on humidity and the temperature of the air inside and outside of the H.V.A.C. system.

TRADEMARKS:

STRETCHDEC, The DEC logo and DEC International are trademarks, or registered trademarks of Dutch Environment Corporation BV in the Netherlands and/or other countries.

RESTRICTIONS:

The STRETCHDEC ducts are not suitable for discharging combustion products from open fireplaces and oil-fired boilers. Neither are the ducts suitable for transporting air with a high concentration of acid and base.

